

# Positive Displacement Large Cold Water Meters

1 1/2" (DN 40 mm) - 2" (DN 50 mm)



## Data Sheet

**Applications** - For use in measurement of potable cold water in residential, commercial and industrial services where flow is in one direction only.

**General** - All Positive Displacement cold water meters (1 1/2" - 2") conform to American Water Works Association (AWWA) C700 Standard Specifications latest revision.

**Measuring Chambers** - Measuring chambers are made of suitable engineering plastics to meet AWWA C700 standards. The piston has approximately the same specific gravity as water. All of the spindles are stainless steel.

**Lead Free Main Case** - The main cases are made of Bismuth BiAlloy CDA89836 or EnviroBrass™ II C89520 and are in compliance with NSF / ANSI 61 standards and the Safe Drinking Water Act (NSF 372). The serial number is permanently marked on the body, along with the size, direction of flow and manufacturer (RG3). The bolts are made of stainless steel to prevent corrosion.

Main Case	Lead Free Bronze
Measuring Unit	Thermoplastic
O-Ring	Nitrile Rubber
Magnet	Ceramic Ferrite
Strainer	Thermoplastic
Register Lens	Tempered Glass
Register Housing & Lid	Bronze or Polymer
Gearing Wheels	Thermoplastic

**Installation** - The meter must be installed in a clean pipeline, free from any foreign materials. The meter should be installed with the direction of flow as indicated by the arrow cast in the meter case. The meter may be installed in horizontal or inclined lines.

**Strainers** - All meters have a strainer installed in the meter and are made of a polypropylene plastic. The strainers are located near the inlet port in the main case just before the measuring chamber. The strainer screens are rigid, snug fitting and have an effective straining area of at least double that of the main case inlet. All strainers are easily removable and replaceable.



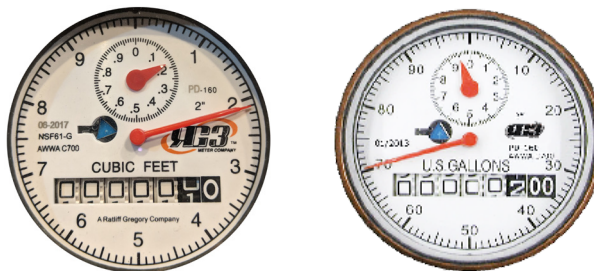
2912 South Access Rd.  
Longview, TX 75602  
PH: 903-753-3456  
Fax: 903-753-5678  
RG3METER.COM



**Direct Read Sealed Registers** - Registers are the straight read, magnetic drive, odometer type with a sweep hand and leak detector. Registers are hermetically sealed to prevent fogging. Registers are roll sealed and dry with a 360° test view. All direct reading register cups are made of copper to prevent corrosion and covered with a high-strength, impact-resistant glass lens to prevent breakage. The register housings and lids are made of high strength polymer or copper alloy. All registers are secured to the main case by means of a tamper-proof Torx screw to allow for in-line service replacement.

Registers include:

- Company name
- Month and year of manufacture
- Center sweep hand
- Large, easy to read numbers
- Size of meter
- Unit of measure  
(Example U.S. Gallons, Cubic Feet, or m3)
- Low flow / leak indicator



Registers include an odometer, which will give the total amount of water flow. One sweep of the hand will be equal to:

1-1/2 & 2" meters     100 gallons/10 cu ft

### Register Options

- Direct Read     Bronze or Plastic
- AMR             Tesla 4 TR Integrated Transceiver Register
- AMI or AMR     Tomahawk Encoder with Tesla Solo or Duo

**Magnetic Drive** - Meters use high strength magnets to provide positive, reliable and dependable register coupling.

**Characteristics**- Meets or exceeds latest revision of AWWA C700 Dimensional Standards. Operational Temperature range 33°F-80°F.

All Bronze Construction	Direct Read & AMR/AMI Register Options	American Made	Excellent Start Up & Low Flow Rate	Built-in Strainer
-------------------------	--	---------------	------------------------------------	-------------------

**Tamper-proof Features** - Registers contain a locking device to prevent theft of water usage. Removing the register requires a special tool.

**Maintenance** - The measuring chamber assembly can be removed in order to be repaired or replaced.

**Warranty** - Standard 5 year new meter accuracy warranty and a 25 year main case warranty.

\* Refer to full warranty for detailed warranty guidelines and standards.



2912 South Access Rd.  
Longview, TX 75602  
PH: 903-753-3456  
Fax: 903-753-5678  
RG3METER.COM



# Positive Displacement Large Cold Water Meters

1-1/2" (DN 40 mm) - 2" (DN 50 mm)



## Specifications

Model		PD 15	PD 20
Size		1-1/2"	2"
Low Flow	USGPM	1-1/2	2
Normal Flow	USGPM	5-100	8-160
High Flow	USGPM	100	160
Continuous	USGPM	50	80
Max Pressure	PSI	150	150
Extreme High Flow (Intermittent)	USGPM	120	170
Operating Temperature	Deg. F	33°-80°	33°-80°
Length	Inches	13"	17"
Height	Inches	7 - 15/16"	8 - 1/2"
Weight	Pounds	25lb	34.6lb
Ends		Flanged	Flanged

\* Due to continuous research and product enhancement, RG3 Meter Company reserves the right the change product or system specifications without notice, except to the extent an outstanding contractual obligation exists.



2912 South Access Rd.  
Longview, TX 75602  
PH: 903-753-3456  
Fax: 903-753-5678  
RG3METER.COM



LGPD12241